

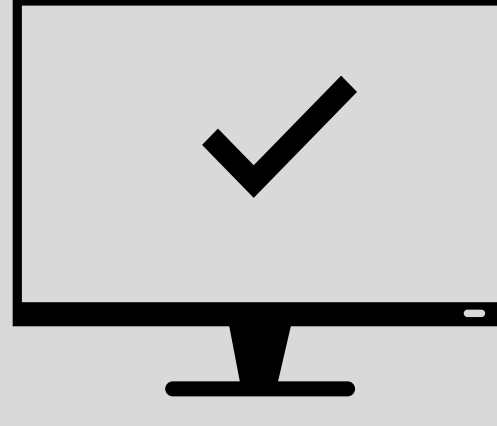
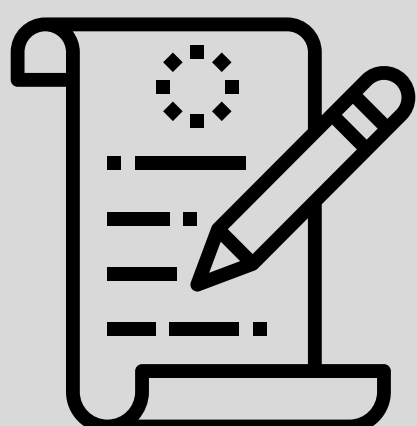
# Reference Data Usage Management

## 8 Benefits of Usage Transparency



### A robust usage monitoring system

Adopting a robust usage monitoring system for reference and other enterprise data can yield benefits on a number of levels. The first is cost: Monitoring true data usage allows firms to ensure they are paying only for the data they need and consume, driving cost reductions.



### Improved compliance

Firms can expect to benefit from improved compliance with vendor licences, helping them avoid financial penalties and streamline the often-expensive audit process.

Armed with greater understanding of internal usage patterns, data managers can ensure users derive full value from paid subscriptions, improving return on investment (ROI) on data services spending.

### Real-time controls

By implementing a proactive control mechanism over data usage, firms can develop and enforce policies with respect to access, particularly where it applies to expensive fee-liable services. Real-time controls can ensure that teams that don't need access to certain costly services aren't permitted to receive them.



### Maximized value from data services

The result is a comprehensive understanding of data usage that helps managers make better-informed decisions on data spending and access, ensuring users' value from data services is maximized. Xmon allows firms to simulate the costs of a reference data request before it is sent out to the vendor and run what-if scenarios to determine the best commercial model to choose from.



### Greater understanding of reference data services usage

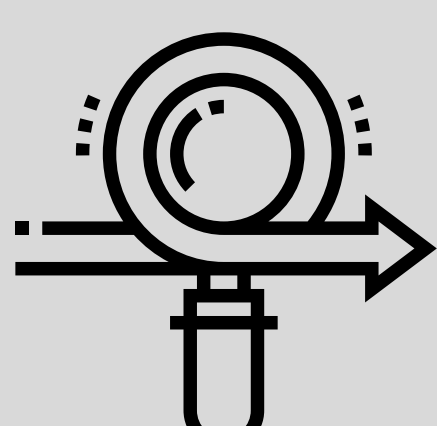
TRG Screen Usage Management helps financial institutions gain greater understanding of their usage of reference data services via the XMon reference data tracking platform. Customers have enjoyed significant business benefits, with one hedge fund reporting **45% savings** from improved transparency and licensing compliance and another a **25% cut** in its annual data spend.



### Transparency around how data sets are being used

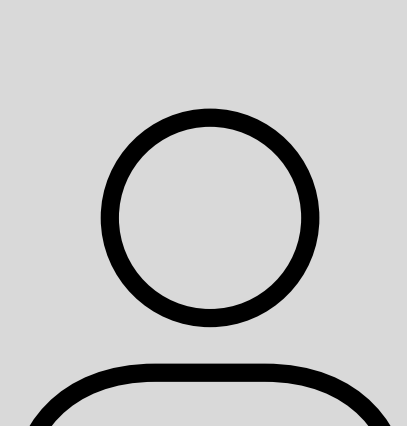
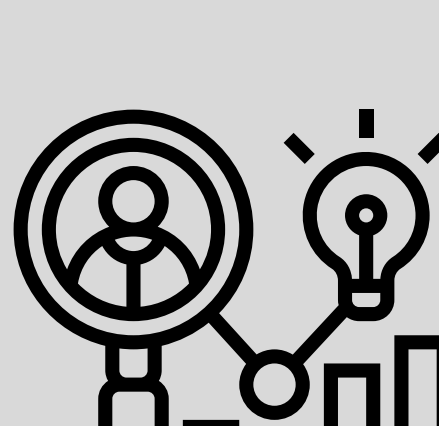
The XMon platform monitors gives data managers transparency around how data sets are being used by monitoring all data entering the organization and tracking all requests to vendors.

XMon also tracks the flow of data through the organization, identifying duplicate requests for the same data sets and mapping service access to internal need, thereby facilitating more accurate cost allocations and more detailed usage reporting. Finally, XMon monitors data leaving the organization, helping providers understand how their data is being consumed by external clients.



### Greater insight into internal usage of reference data services

Through this approach, XMon helps financial institutions establish enhanced controls for data managers, providing them with greater insight into internal usage of reference data services. It also supports streamlined reporting and eases the vendor audit process, by keeping usage data continuously up to date.



### Simpler account set up

Organizations have multiple accounts with the same vendor and use this for cost allocation purposes. With XMon, these accounts can be consolidated into a much smaller number, simplifying the reconciliation process and reducing spend as well while maintaining accurate and usage based allocation to the different consumers.



## Reference Data Usage Management

TRG Screen Usage Management helps financial institutions gain greater understanding of their usage of reference data services via the XMon reference data tracking platform, offered in partnership with XPansion.

XMon features many of the key attributes required for grasping controls of reference data usage, enabling clients to optimize cost and allocate service expenditure more accurately and fairly.

More info: [www.trgscreen.com/xmon](http://www.trgscreen.com/xmon)

